



How has transport changed over time?

Travel is moving from one place to another.

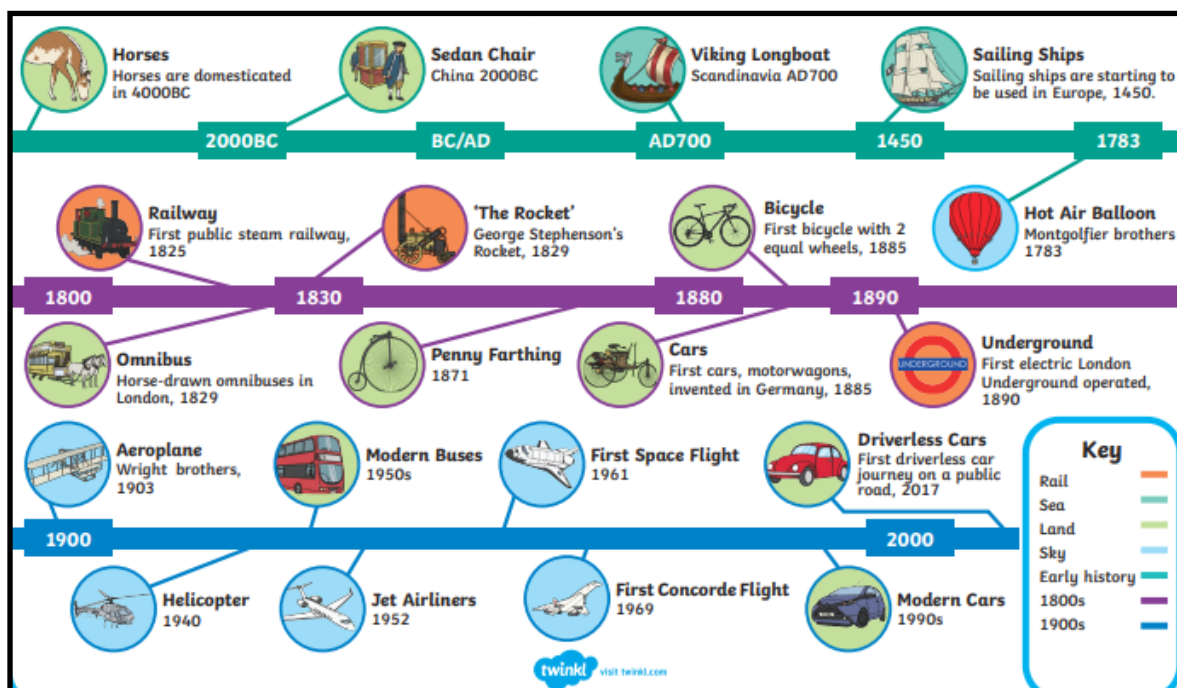
Transport is carrying people or good from one place to another.

There are many different ways of travelling over land, sea and air. Some are fast. Some are slow. Some are better for short distances. Some are better for longer journeys. What is your favourite way to travel? Why?

We will be focussing on the history of boats, bikes, trains, cars and planes. Here are some key facts to remember.

- **Long boats** were used by the Vikings to travel long distances to other countries.
- The **penny-farthing** was a bicycle that had one large wheel in front and one smaller one at the back.
- **Birmingham** has 35 miles of **canals**, which made it an important centre for trade.
- **Robert Trevithick** built the first steam locomotive to run on rails in 1803.
- The first train line was from **Darlington to Stockton**.
- **Karl Benz** invented the first petrol car.
- The **Wright Brothers** were the first people to fly successfully in a plane.

Timeline





Significant historical figure: Amelia Earhart

- Amelia was an American pilot or aviator.
- She was an excellent pilot and set many records.
- She became the first woman and the second person to fly solo across the Atlantic.
- During an attempt to fly around the world, Amelia's plane disappeared.
- What happened to her is still a mystery.



Key Vocab

source	Anything that tells us about the past
evidence	Information based on sources about what the past was like.
eye-witness	A person who saw something or experienced something and can tell others about it.
expedition	A journey taken for a special reason, or a group making such a trip.
navigation	Setting a course for finding your way to a destination, especially by ship, aircraft, or other vehicle.
exploration	Exploring new or unknown places to discover or search for something.
triumph	To win or overcome difficulties.
resources	A resource is something that humans need and value.

